

## Lifter

Sample ID: 2111CSALA8073.2236

Matrix: Hemp

Type: Industrial Hemp

Sample Size: 8 grams

County Sample ID:

Produced: N/A

Collected: 11/29/2021

Received: 11/29/2021

Completed: 12/02/2021

Physical Address:

Sampler:

Sample Received By:


Sample Tested By: Richard Butunts

Whole Organix LLC

Registration #:

Registrant Name:

Registrant Contact #:

	<b>ND</b>	<b>16.4644%</b>	<b>21.1172%</b>
	<b>Δ9-THC</b>	<b>Total CBD</b>	<b>Total Cannabinoids</b>

## Cannabinoids

Testing method: HPLC-SOP 101

Analyte	LOD	LOQ	Results	Results
	%	%	%	mg/g
CBDa	0.0133	0.025	18.4426	184.4258
CBCA *	0.0221	0.025	0.9610	9.6105
THCa	0.0184	0.025	0.7075	7.0754
CBGa	0.0187	0.025	0.4741	4.7409
CBD	0.0175	0.025	0.2902	2.9023
CBDVA *	0.0238	0.025	0.1209	1.2086
CBG	0.0229	0.025	0.0848	0.8482
CBC	0.0213	0.025	0.0360	0.3604
CBDV	0.0204	0.025	ND	ND
CBN	0.0245	0.025	ND	ND
CBT *	0.021	0.0975	ND	ND
THCV	0.0242	0.025	ND	ND
THCVA *	0.0243	0.025	ND	ND
Δ8-THC	0.022	0.025	ND	ND
Δ9-THC	0.0207	0.025	ND	ND
<b>Total THC</b>			<b>0.6205</b>	<b>6.2051</b>
<b>Total</b>			<b>21.1172</b>	<b>211.1721</b>

Date Tested: 11/30/2021

Total THC = THCa \* 0.877 + d9-THC

Total CBD = CBDa \* 0.877 + CBD

LOQ = Limit of Quantitation; LOD = Limit of Detection; NT = Not Tested; ND = Not Detected. The reported result is based on a sample weight with the applicable moisture content for that sample;

\* Denotes analytes pending ISO-17025 scope addition

<b>11.0%</b> Moisture Moisture Analyzer SOP-103 Date Tested: 11/30/2021	<b>-</b> <b>NT</b> Water Activity Water Activity Meter SOP-102	<b>NT</b> Foreign Matter Visual Inspection SOP-600
--	---	--


 ISO / IEC 17025:2017 ACCREDITED  
 LABORATORY  
 Accreditation No. 73653



 Neya Jourabchian  
 Laboratory Director  
 12/02/2021



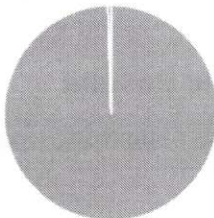
 Mikaela Gutierrez  
 COA Review  
 12/02/2021



Product identity: 826-24-1  
Client/Metric ID:  
Laboratory ID: 21-014329-0003

**Summary**

**Potency:**

Analyte	Result (%)		
Δ8-THC†	92.2	 <ul style="list-style-type: none"> <li>● Δ8-THC</li> <li>● Δ8-THCV</li> </ul>	CBD Total <LOQ
Δ8-THCV	0.417		THC-Total <LOQ (Reported in percent of total sample)

**Residual Solvents:**

All analytes passing and less than LOQ.

**Pesticides:**

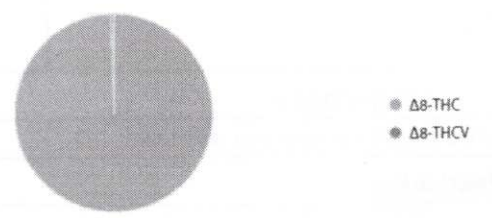
All analytes passing and less than LOQ.



**Product identity:** 826-24-1  
**Client/Metric ID:** .  
**Sample Date:**  
**Laboratory ID:** 21-014329-0003  
**Evidence of Cooling:** No  
**Temp:** 20.4 °C  
**Relinquished by:** UPS

### Sample Results

Potency	Method J AOAC 2015 V98-6 (mod)			Units %	Batch: 2111034	Analyze: 12/10/21 6:06:00 AM
Analyte	As Received	Dry weight	LOQ	Notes		
CBC	< LOQ		0.0857			
CBC-A†	< LOQ		0.0857			
CBC-Total†	< LOQ		0.161			
CBD	< LOQ		0.0857			
CBD-A	< LOQ		0.0857			
CBD-Total	< LOQ		0.161			
CBDV†	< LOQ		0.0857			
CBDV-A†	< LOQ		0.0857			
CBDV-Total†	< LOQ		0.160			
CBE†	< LOQ		0.0857			
CBG†	< LOQ		0.0857			
CBG-A†	< LOQ		0.0857			
CBG-Total	< LOQ		0.160			
CBL†	< LOQ		0.0857			
CBL-A†	< LOQ		0.0857			
CBL-Total†	< LOQ		0.161			
CBN	< LOQ		0.0857			
CBT†	< LOQ		0.0857			
Δ8-THC†	92.2		0.857			
Δ8-THCV	0.417		0.0857			
Δ9-THC	< LOQ		0.0857			
THC-A	< LOQ		0.0857			
THC-Total	< LOQ		0.161			
THCV†	< LOQ		0.0857			
THCV-A†	< LOQ		0.0857			
THCV-Total†	< LOQ		0.160			
<b>Total Cannabinoids†</b>	<b>92.6</b>					





12423 NE Whitaker Way  
 Portland, OR 97230  
 503-254-1794



**Report Number:** 21-014329/D004.R000  
**Report Date:** 12/15/2021  
**ORELAP#:** OR100028  
**Purchase Order:**  
**Received:** 12/08/21 12:29

Solvents						Residual Solvents by GC/MS					
Method	Result	Limits	LOQ	Status	Notes	Analyte	Result	Limits	LOQ	Status	Notes
1,4-Dioxane	< LOQ	380	100	pass		2-Butanol	< LOQ	5000	200	pass	
2-Ethoxyethanol	< LOQ	160	30.0	pass		2-Methylbutane (Isopentane)	< LOQ		200		
2-Methylpentane	< LOQ		30.0			2-Propanol (IPA)	< LOQ	5000	200	pass	
2,2-Dimethyl butane	< LOQ		30.0			2,2-Dimethylpropane (neo-pentane)	< LOQ		200		
2,3-Dimethyl butane	< LOQ		30.0			3-Methylpentane	< LOQ		30.0		
Acetone	< LOQ	5000	200	pass		Acetonitrile	< LOQ	410	100	pass	
Benzene	< LOQ	2.00	1.00	pass		Butanes (sum)	< LOQ	5000	400	pass	
Cyclohexane	< LOQ	3880	200	pass		Ethyl acetate	< LOQ	5000	200	pass	
Ethyl benzene	< LOQ		200			Ethyl ether	< LOQ	5000	200	pass	
Ethylene glycol	< LOQ	620	200	pass		Ethylene oxide	< LOQ	50.0	20.0	pass	
Hexanes (sum)	< LOQ	290	150	pass		Isopropyl acetate	< LOQ	5000	200	pass	
Isopropyl benzene (Cumene)	< LOQ	70.0	30.0	pass		m,p-Xylene	< LOQ		200		
Methanol	< LOQ	3000	200	pass		Methylene chloride	< LOQ	600	60.0	pass	
Methylpropane (Isobutane)	< LOQ		200			n-Butane	< LOQ		200		
n-Heptane	< LOQ	5000	200	pass		n-Hexane	< LOQ		30.0		
n-Pentane	< LOQ		200			o-Xylene	< LOQ		200		
Pentanes (sum)	< LOQ	5000	600	pass		Propane	< LOQ	5000	200	pass	
Tetrahydrofuran	< LOQ	720	100	pass		Toluene	< LOQ	890	100	pass	
Total Xylenes	< LOQ		400			Total Xylenes and Ethyl benzene	< LOQ	2170	600	pass	

[www.columbialaboratories.com](http://www.columbialaboratories.com)

Test results relate only to the parameters tested and to the samples as received by the laboratory. Test results meet all requirements of NELAP and the Columbia Laboratories quality assurance plan unless otherwise noted. This report shall not be reproduced, except in full, without the written consent of this laboratory. Samples will be retained for a maximum of 30 days from the receipt date unless prior arrangements have been made.

Testing in accordance with: OAR 333-007-0400 OAR 333-007-0410 OAR 333-007-0430



12423 NE Whitaker Way  
 Portland, OR 97230  
 503-254-1794

**Report Number:** 21-014329/D004.R000  
**Report Date:** 12/15/2021  
**ORELAP#:** OR100028  
**Purchase Order:**  
**Received:** 12/08/21 12:29



Pesticides											
Method AOAC 2007.01 & EN 15662 (mod) Units mg/kg Batch 2111056 Analyze 12/13/21 09:31 AM											
Analyte	Result	Limits	LOQ	Status	Notes	Analyte	Result	Limits	LOQ	Status	Notes
Abamectin	< LOQ	0.50	0.250	pass		Acephate	< LOQ	0.40	0.250	pass	
Acequinocyl	< LOQ	2.0	1.00	pass		Acetamiprid	< LOQ	0.20	0.100	pass	
Aldicarb	< LOQ	0.40	0.200	pass		Azoxystrobin	< LOQ	0.20	0.100	pass	
Bifenazate	< LOQ	0.20	0.100	pass		Bifenthrin	< LOQ	0.20	0.100	pass	
Boscalid	< LOQ	0.40	0.200	pass		Carbaryl	< LOQ	0.20	0.100	pass	
Carbofuran	< LOQ	0.20	0.100	pass		Chlorantraniliprole	< LOQ	0.20	0.100	pass	
Chlorfenapyr	< LOQ	1.0	0.500	pass		Chlorpyrifos	< LOQ	0.20	0.100	pass	
Clofentezine	< LOQ	0.20	0.100	pass		Cyfluthrin	< LOQ	1.0	0.500	pass	
Cypermethrin	< LOQ	1.0	0.500	pass		Daminozide	< LOQ	1.0	0.500	pass	
Diazinon	< LOQ	0.20	0.100	pass		Dichlorvos	< LOQ	1.0	0.500	pass	
Dimethoate	< LOQ	0.20	0.100	pass		Ethoprophos	< LOQ	0.20	0.100	pass	
Etofenprox	< LOQ	0.40	0.200	pass		Etoazole	< LOQ	0.20	0.100	pass	
Fenoxycarb	< LOQ	0.20	0.100	pass		Fenpyroximate	< LOQ	0.40	0.200	pass	
Fipronil	< LOQ	0.40	0.200	pass		Fonicamid	< LOQ	1.0	0.400	pass	
Fludioxonil	< LOQ	0.40	0.200	pass		Hexythiazox	< LOQ	1.0	0.400	pass	
Imazalil	< LOQ	0.20	0.100	pass		Imidacloprid	< LOQ	0.40	0.200	pass	
Kresoxim-methyl	< LOQ	0.40	0.200	pass		Malathion	< LOQ	0.20	0.100	pass	
Metalaxyl	< LOQ	0.20	0.100	pass		Methiocarb	< LOQ	0.20	0.100	pass	
Methomyl	< LOQ	0.40	0.200	pass		MGK-264	< LOQ	0.20	0.100	pass	
Myclobutanil	< LOQ	0.20	0.100	pass		Naled	< LOQ	0.50	0.250	pass	
Oxamyl	< LOQ	1.0	0.500	pass		Paclobutrazole	< LOQ	0.40	0.200	pass	
Parathion-Methyl	< LOQ	0.20	0.200	pass		Permethrin	< LOQ	0.20	0.100	pass	
Phosmet	< LOQ	0.20	0.100	pass		Piperonyl butoxide	< LOQ	2.0	1.00	pass	
Prallethrin	< LOQ	0.20	0.200	pass		Propiconazole	< LOQ	0.40	0.200	pass	
Propoxur	< LOQ	0.20	0.100	pass		Pyrethrin I (total)	< LOQ	1.0	0.500	pass	
Pyridaben	< LOQ	0.20	0.100	pass		Spinosad	< LOQ	0.20	0.100	pass	
Spiromesifen	< LOQ	0.20	0.100	pass		Spirotetramat	< LOQ	0.20	0.100	pass	
Spiroxamine	< LOQ	0.40	0.200	pass		Tebuconazole	< LOQ	0.40	0.200	pass	
Thiacloprid	< LOQ	0.20	0.100	pass		Thiamethoxam	< LOQ	0.20	0.100	pass	
Trifloxystrobin	< LOQ	0.20	0.100	pass							

[www.columbialaboratories.com](http://www.columbialaboratories.com)

Test results relate only to the parameters tested and to the samples as received by the laboratory. Test results meet all requirements of NELAP and the Columbia Laboratories quality assurance plan unless otherwise noted. This report shall not be reproduced, except in full, without the written consent of this laboratory. Samples will be retained for a maximum of 30 days from the receipt date unless prior arrangements have been made.

Testing in accordance with: OAR 333-007-0400 OAR 333-007-0410 OAR 333-007-0430